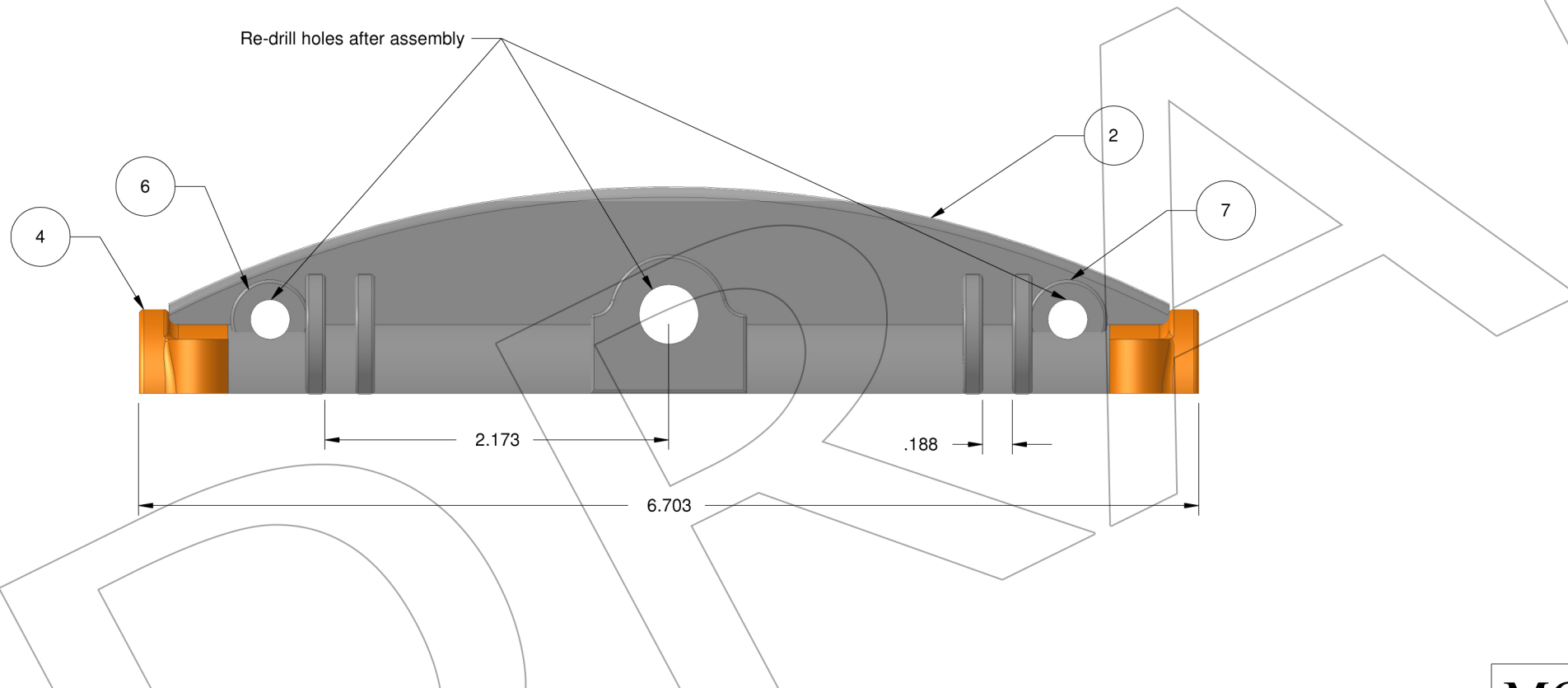
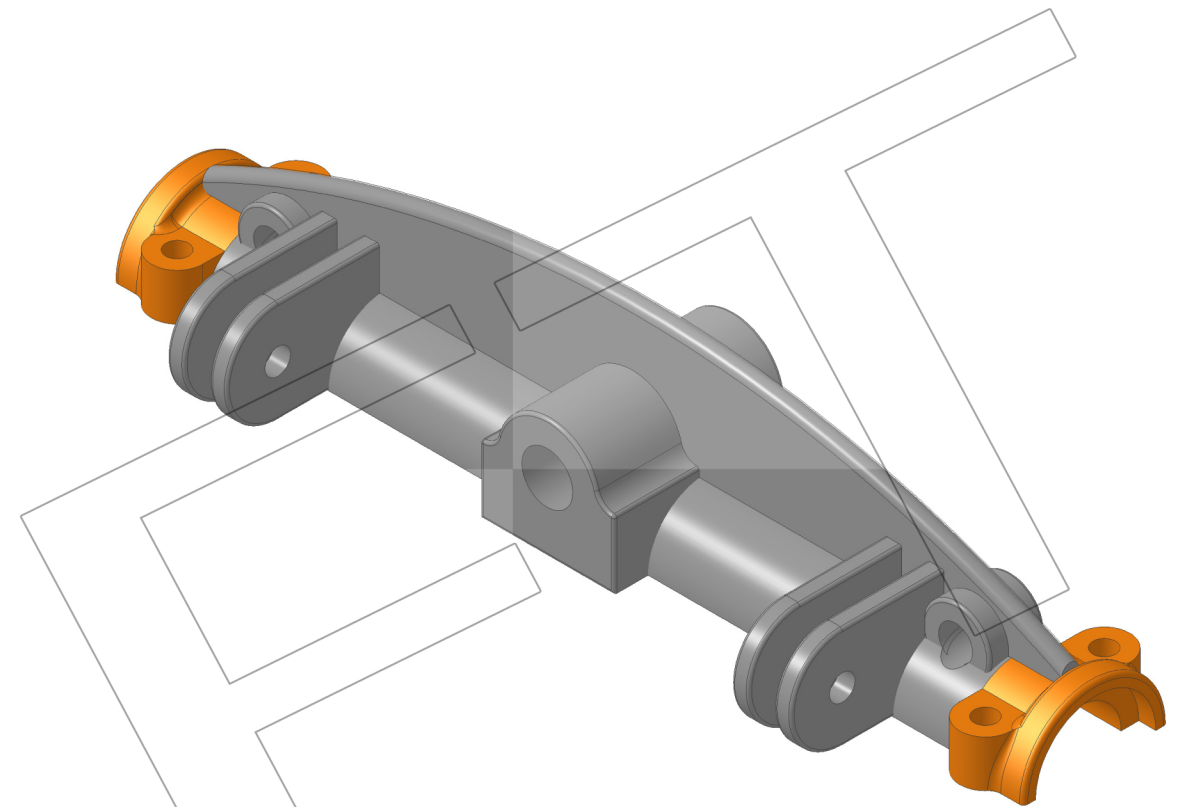
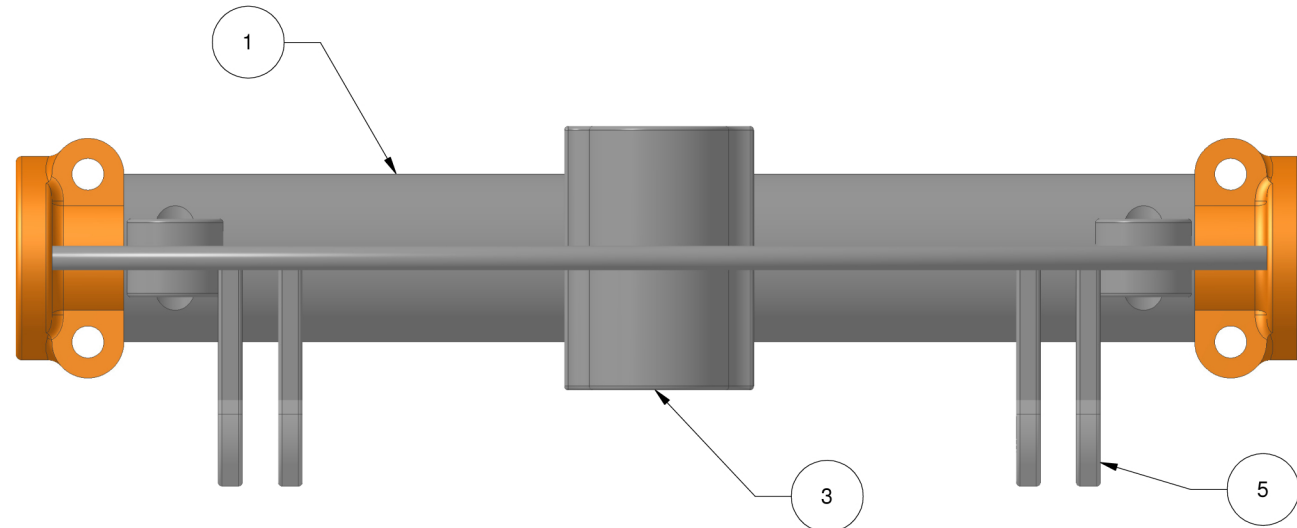


Notes:  
Front Bolster Assembly is silver soldered construction



# LIGHTNING BALANCED ENGINE

Item Number	Quantity	Part Number	Part Name	Revision	Sheet Number
1	1	6C-1	Support Tube	1	105
2	1	6C-2	Rlb	1	105
3	1	6C-3	Pivot Block	1	106
4	2	6C-4	Axle Clip	1	107
5	4	6C-5	Hound Bracket	1	105
6	1	6C-6	Bushing_Left	1	106
7	1	6C-6	Bushing_Right	1	106

## MORRISON & MARVIN ENGINE WORKS

Box 555 Benton City, WA 99320 USA

DESIGNED BY Roland Morrison / Marvin Hedberg		DESCRIPTION <b>Front Bolster Assembly</b>	
DRAWN BY Dave Otto	DATE 11/21/2015		
MATERIAL	SIZE <b>B</b>	PART NO.	REV <b>1</b>
SCALE		SHEET	<b>12</b>